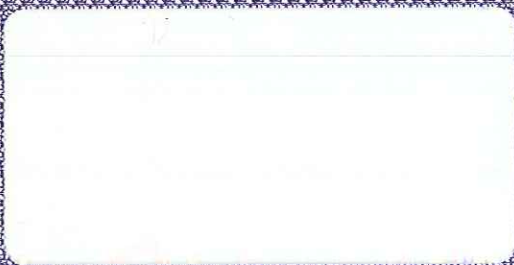


① REMOVE SIDE EDGES FIRST. ①
FOLD, CREASE AND TEAR THIS STUB ALONG DOTTED LINES

② REMOVE SIDE EDGES FIRST. ②
FOLD, CREASE AND TEAR THIS STUB ALONG DOTTED LINES

① REMOVE SIDE EDGES FIRST. ①
FOLD, CREASE AND TEAR THIS STUB ALONG DOTTED LINES



PRIVATE AND CONFIDENTIAL